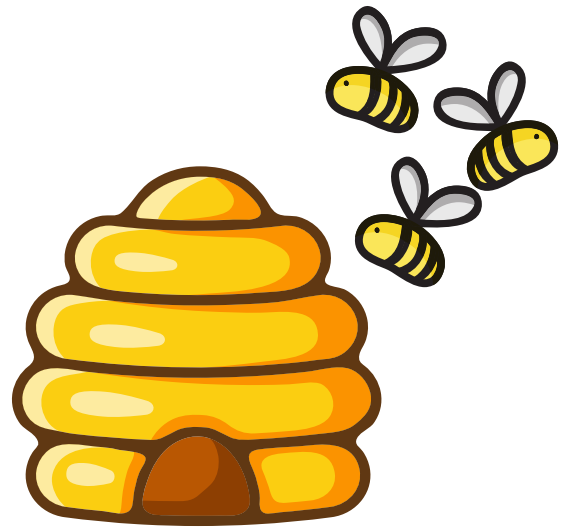




Banana and Honey Ice Cream

Ingredients

- 2 bananas
 - 3 tbsp honey
 - 500g plain natural yoghurt
- If your dog is lactose intolerant please use an alternative



How to make

Mash up the banana in a bowl and then pour in the honey and yoghurt. Stir the ingredients together.

Pour into small containers and freeze.

Once frozen, your dog can enjoy a tasty cool treat!

Please note - Should your dog have any underlying health problems please check with your vet that the ingredients are suitable for your dog to eat before feeding. Don't feed them too much as it's a treat!